

ENVIRONMENT



KLCCP Stapled Group’s commitment towards promoting environmental sustainability focuses on delivering sustainable developments, enhancing a sustainable society and cultivating a green and safe corporate culture. We continue to take proactive measures in minimising environmental impact through efficient management of our operations in the areas of Greenhouse Gas emission(GHG), energy efficiency, responsible water and waste management.

SUSTAINABLE MATTERS



Supporting the UNSDGs

Climate Change
Environmental Management

WHY IT MATTERS

- Shows our support towards the global agenda on Climate Change and the country’s initiatives towards energy efficiency, environment and climate change
- Growing level of environmental awareness to protect the planet
- Cultivates an eco-mindset among employees

VALUES CREATED

- Creating a greener environment for the well-being of our community through responsible practices in reducing GHG emission, energy consumption, water use and waste management
- Achieved cost savings with reduced energy consumption, water use for our tenants and the use of renewable energy in operating costs for our retail
- Conservation of natural habitat and eco system within our KLCC Park, providing a green convenient, tranquil and conducive destination for our community
- Increased awareness amongst employees through participation in various environmental programmes organised

SEC 01

SEC 02

SEC 03

SEC 04

SEC 05

SEC 06

SEC 07

ENVIRONMENT

Our commitment in environmental stewardship is focused on improving our environmental practices and operational sustainability through:

<p>Driving down energy consumption in our operations</p> 	<p>Minimising use of water throughout our assets</p> 
<p>Influencing suppliers/contractors on commitment in conserving the environment</p> 	<p>Minimising quantities of waste generated at our assets</p> 
<p>Promoting biodiversity</p> 	

OUR APPROACH

At KLCCP Stapled Group, we acknowledge our responsibility and emphasise the needs in raising awareness and understanding of environmental sustainability amongst our business units, stakeholders and the broader community. In line with our Code of Conduct and Business Ethics (CoBE) and as a real estate owner, developer and manager, we aim to minimise disruptions to the community and the environment by lowering the environmental footprint of our buildings and use energy, water and resources more efficiently.

With inherent focus on mitigating the environmental related challenges, and in achieving operational sustainability, KLCCP Stapled Group has embarked to strengthen its foothold in the areas of energy efficiency and waste management in all its assets and operations. In our 3-year Sustainability Roadmap (2016 – 2018), we have identified our baseline and targets for improving our environmental sustainability performance in these areas.

We strive to ensure our decisions contribute to improvements in environmental sustainability, working in-tandem with our tenants in green building initiatives, the local authority, Government and other stakeholders in achieving our targets.

KLCCP Stapled Group is committed in achieving its aspiration to be recognised as a responsible organisation that places great importance on environmental best practices throughout our operations.

With the growing awareness of environmental concerns, particularly in relation to climate change, it is imperative to all companies to address and mitigate the adverse effect resulting from business operations worldwide and the risks aggressively. The alarming rate of ozone depletion, the 2 degrees scenario, chemical pollution and biodiversity loss among others, call for the need to have in place initiatives for environmental conservation to ensure a safe and healthy environment for the future generations.

CLIMATE CHANGE

Climate change results in adverse weather and global warming which will have impact on our wear and tear of assets and cost associated with repair and maintenance. Increased demand on ventilation and air-conditioning will also result in higher energy consumption. With the increasing awareness on climate change, there are also increasing demand for greener products and services which puts pressure on organisations to shift towards greener economy.

Climate change is fast becoming a global agenda and Malaysia is stepping up efforts in combating global climate change with the implementation of initiatives which include the development of the Climate Change Act in 2019, tax incentives to companies that invest in energy efficient set ups and target to increase use of renewable energy from 2% to 40% by 2025. In support of these initiatives, KLCCP Stapled Group is committed to address climate change risks through reduction of its energy consumption and carbon emission in its business operations. To-date, our facility management company, KLCC Urusharta Sdn Bhd, our car parking management company, KPM and hotel, MOKL Hotel are ISO 14001 EMS certified.

KLCCP Stapled Group anticipates, mitigates and develops adaptation strategies to face the upcoming carbon risks and opportunities, which may affect our tenants, users, guests and community. We monitor our GHG emission based on:

Scope ONE	Scope TWO
<p>DIRECT COMBUSTION (Natural Gas and Diesel Consumption)</p>	<p>INDIRECT COMBUSTION (Electricity and Chilled Water Consumption)</p>

ENVIRONMENT

MEASURING CARBON EMISSION

Carbon management in our business operations is in relation to utilities (electricity, natural gas, chilled water) and diesel. We have developed a carbon inventory to establish our emission baseline and monitor our carbon emission on a quarterly basis and track our progress.

At our hotel, the tracking of GHG emission is carried out through sampling of generator dust and smoke stack, chemical hazard risk assessment and local exhaust ventilation, among others. Our hotel also complies with the Clean Air Regulation 2014 and by 2018/2019 for boilers and generators.

Performance for the Year

GreenHouse Gas Emission by Segments					
	2018	2017	2016	2015	2014
	∇	∇	∇	∇	∇
SCOPE 1 (mtCO _{2e})					
OFFICE AND CAR PARK	4.66	9.63	5.47	5.47	8.32
RETAIL	1,635	1,573	1,540	1,540	1,537
HOTEL	1,192	1,913	1,925	1,946	1,892
TOTAL	2,831.66	3,496	3,471	3,491	3,437
SCOPE 2 (mtCO _{2e})					
OFFICE AND CAR PARK	82,667	87,078	90,214	90,138	90,699
RETAIL	27,141	27,462	33,103	32,819	21,422
HOTEL	16,583	18,003	17,511	17,330	17,924
TOTAL	126,391	132,543	140,828	140,287	130,045

Overall, KLCCP Stapled Group's GHG emission for 2018 totaled 129,223 metric tonnes, a decrease of 5% as compared to 2017. The reduction was contributed by the continued installation of the LED lighting and replacement of old fittings with new and more efficient fittings at Menara 3 PETRONAS, Suria KLCC and MOKL Hotel.

ENERGY MANAGEMENT AND EFFICIENCY

As one of our sustainability agendas and a pillar to our carbon emission reduction strategy, we continue to implement energy efficient initiatives to consistently achieve our energy reduction performance across our business operations. We monitor and track our energy consumption and continued to install energy saving fixtures in our effort to reduce energy consumption in our office, retail and hotel properties as it is vital to achieve KLCCP Stapled Group's energy efficient goals and impact on overhead, cost, return on investment and the commensurate reduction of GHG emission.

Key Initiatives for the Year

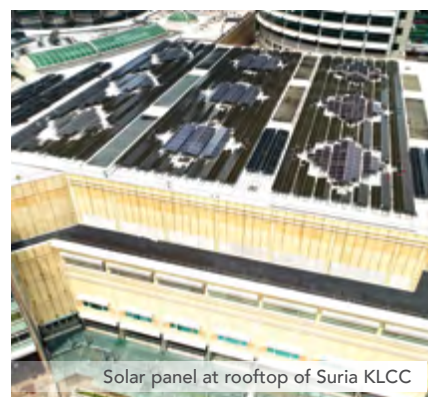
PETRONAS Twin Towers	<ul style="list-style-type: none"> The establishment of the Energy Audit Committee in May 2018 to address our energy efficiency management. It is a platform to review and deliberate potential energy saving ideas and initiatives, share best practices and explore opportunities within the Group to target improvement of energy use towards better asset sustainability and longevity. Replacement of secondary valve for heat exchanger Reconditioning of heat exchanger plate
Menara 3 PETRONAS	<ul style="list-style-type: none"> Retrofitting Programmable Lighting Controller (PLC) type lighting to LED lighting at lift lobby area Re-scheduling of Air Handling Unit (AHU) operations to start from 6.30 a.m. to 7.30 a.m.
Menara Dayabumi	<ul style="list-style-type: none"> Implementation of LED lighting at common areas, office and car park Revision of schedule and usage of chillers during office hours: Monday to Wednesday – chillers in operation at 3,000 tonnes Thursday to Friday – chillers in operation at 2,600 tonnes Replacement of cool water system piping resulting in less water friction thus reducing running of pump
Suria KLCC	<ul style="list-style-type: none"> Replacement of all recess lights from normal tubes to LED lights Progressive escalators modernisation at Park Mall under Phase 3 to 5
MOKL Hotel	<ul style="list-style-type: none"> Installation of LED lights in the renovated guestrooms as per design specifications, resulting in a 32% reduction in wattage per room Installation of all walk-in refrigerators and freezers with plastic curtains to reduce cold air from escaping Upgrading of InnCom (Integrated room management system i.e. interfaces and energy savings software and hardware) in all guestrooms to improve guest comfort and energy saving

ENVIRONMENT

3-Year (2016-2018) Sustainability Roadmap – Driving Down Energy Consumption

3-YEAR TARGET (against 2015 baseline)	STATUS	
Office Reduction of 5%	● ○ ○	Achieved Reduction of 19%
Retail Reduction of 3%	● ○ ○	Achieved Reduction of 27%
Hotel Reduction of 3%	● ○ ○	Achieved Reduction of 10%

● ○ ○ Met 2018 target ○ ○ ● 2018 target not met



Performance for the Year

Energy Consumption by Segments					
('000 kWh)	2018	2017	2016	2015	2014
	∨	∨	∨	∨	∨
OFFICE AND CAR PARK	88,044	82,900	95,426	99,656	100,209
RETAIL	14,293	14,851	15,791	15,412	13,641
HOTEL	13,621	14,141	13,541	13,830	14,678
TOTAL	115,958	111,892	124,758	128,898	128,528

Energy consumption registered an increase of 3.6% from 111,892,000 kWh in 2017 to 115,958,000 kWh in 2018 contributed by ongoing works for the “Workplace For Tomorrow” at all office buildings.

Performance for the Year

Energy Intensity (kWh Per Square meter)	
	2018
	∨
PETRONAS Twin Towers	70.10
Menara 3 PETRONAS	83.93
Menara Dayabumi	97.53
Menara ExxonMobil	97.67
Suria KLCC	99.56
MOKL Hotel	441

Renewable Energy

Suria KLCC’s photovoltaic system located at the rooftop has contributed towards the mall’s electricity saving of approximately 15.8 million kWh, equivalent to RM1.4 million since it began operations in 2012. It generates about 30% of Suria KLCC’s power requirement per month and contributes to the GHG emission reduction by approximately 360,000 kg carbon dioxide (CO²) per year.

Solar Energy 5-Year performance					
('000 kWh)	2018	2017	2016	2015	2014
	∨	∨	∨	∨	∨
ENERGY GENERATED FROM SOLAR	512,257	510,000	553,093	591,216	551,162
SAVINGS (RM)	187,000	186,000	324,000	282,000	201,000

WATER MANAGEMENT

Water is a key element in our everyday life. Despite its abundance in some areas, millions of people around the world are still facing water scarcity due to lack of infrastructure, uneven distribution and access, contamination and adverse weather conditions. Rapid industrialisation, deforestation, unsustainable agricultural practices and fast growing populations are putting pressure on companies to understand how water issues can destabilise, radically alter, or halt business performance.

Despite having plenty of rainfall, Malaysia still encounters water shortages in some states for a certain period each year. Water rationing and unscheduled interruptions over recent years have adversely affected various industries and investors’ confidence.

ENVIRONMENT

Though our business operations are located within water abundance areas, we are equally concerned about the recurring water crisis faced by the people in some areas. In responding to this issue, we are taking several initiatives to effectively and efficiently manage our water use as water resources is critical to our business sustainability and investments. As a real estate owner, developer and manager, we aim to keep consumption to a minimum, reuse water and prevent water pollution. Efficient water management also translates to less energy which reduces carbon footprint and in-turn lowers our operational cost.

3-Year (2016-2018) Sustainability Roadmap – Minimising water consumption

3-YEAR TARGET (against 2015 baseline)	STATUS	RESULTS
Office Reduction of 28%	○ ○ ●	Recorded a reduction of 0.2% Target reduction not met due to: 1. Water tank cleaning activity at PETRONAS Twin Towers 2. Massive work on transforming offices into “Workplace For Tomorrow” (WFT at PETRONAS Twin Towers, Menara 3 PETRONAS, Menara ExxonMobil and Menara Dayabumi. New equipment in place i.e vending machine. 3. Water tank lining refurbishment works.
Retail Reduction of 10%	● ○ ○	Achieved reduction of 13%
Hotel Reduction of 6%	● ○ ○	Achieved reduction of 13%

● ○ ○ Met 2018 target ○ ○ ● 2018 target not met

Key Initiatives for the Year

OFFICE	<ul style="list-style-type: none"> Installation of water aerators and split valve at all lavatories at Menara 3 PETRONAS Installation of Variable Speed Drive (VSD) to regulate the domestic water pump operating speed at Menara 3 PETRONAS Replacement of vertical domestic water piping at Menara Dayabumi
RETAIL	<ul style="list-style-type: none"> Installation of water meter for all tenants that use water to track consumption Progressively change of water saving water tap in all toilets
HOTEL	<ul style="list-style-type: none"> Use of water restrictors and “seat” between pipe and faucet to stop drips in all kitchens Installation of aerator at hand basin tap in renovated guestrooms

Performance for the Year

Water Consumption by Segments					
(m ³)	2018	2017	2016	2015	2014
	⇓	⇓	⇓	⇓	⇓
OFFICE AND CAR PARK	589,491	591,444	646,355	681,605	754,269
RETAIL	497,347	569,490	607,715	627,125	-
HOTEL	154,530	169,103	181,678	191,796	211,715
TOTAL	1,241,368	1,330,037	1,435,748	1,500,526	965,984

With our ongoing initiatives, overall water consumption for 2018 reduced by 6.7% being contributed by the installation of water aerators and variable speed drive at Menara 3 PETRONAS and Menara Dayabumi and use of water restrictors at MOKL Hotel.

ENVIRONMENT

WASTE MANAGEMENT

KLCCP Stapled Group continued its effort in managing waste disposal in a responsible manner to ensure the wellbeing of our tenants, guests, customers and the community at large. Besides being one of the key platforms in which we create sustainability awareness among employees, it is also part of our commitment and contribution towards our environment for the benefit of our future generation.

As a property investment and development group, our approach to waste management covers construction waste produced during development and renovation of our buildings, municipal waste produced

during operation of our buildings by the various users and occupants, which includes domestic and hazardous waste. Domestic waste comprises solid waste, compostable materials, recyclable materials and reusable materials whilst hazardous waste generated include used fluorescent bulbs, used batteries, spent lubricating oil, spent solvents and electronic wastes.

In respect to hazardous waste, KLCCP Stapled Group complies with the Scheduled Wastes Regulation 2005 (Environmental Quality Act 1974) by the Department of Environment (DOE), Malaysia. All the generated hazardous waste from our respective assets are disposed to the waste facility managed

by Kualiti Alam, Sdn Bhd, registered and licensed with DOE. All scheduled waste will be weighed and inventory will be tracked on a monthly basis. Collection of scheduled waste are undertaken within 180 days by Kualiti Alam, and e-consignment note are filed into DOE's eSwis website.

At our hotel, segregation of waste has been implemented at source - at kitchens, guestrooms and engineering. Waste for landfill or recycled waste are submitted by the waste vendor and tracked on a monthly basis. The data is collected and trended for any abnormalities prior to corrective actions being taken. The waste vendor uses a weighing machine at the Waste Management Center to obtain a more accurate data on recycled waste.

3-Year (2016-2018) Sustainability Roadmap – Minimising water consumption

3-YEAR TARGET (against 2015 baseline)	STATUS	RESULTS
Office Reduction of 9%	○ ○ ●	Waste Generation Recorded an increase of 100% Target reduction was not met due to: 1. Massive work on transforming offices into "Workspace For Tomorrow" at PETRONAS Twin Towers, Menara 3 PETRONAS, Menara ExxonMobil and Menara Dayabumi 2. Ongoing initiatives of changing fluorescent bulbs to LED lights under GBI initiatives at PETRONAS Twin Towers and Menara 3 PETRONAS 3. Major disposal of electronic waste at PETRONAS Twin Towers
Retail Reduction of 3%	● ○ ○	Waste Generation Achieved reduction of 17%
Hotel Waste generation Expected increase of 11% (Due to hotel's masterplan refurbishment)	● ○ ○	Waste Generation Achieved reduction of 47%
Waste intensity Reduction of 1%		Waste intensity Achieved reduction of 39%
Waste diversion Increase of 23.00%		Waste diversion Achieved increase of 24.71%

● ○ ○ Met 2018 target ○ ○ ● 2018 target not met

ENVIRONMENT

Key Initiatives for the Year

Recycling	<ul style="list-style-type: none"> Ongoing awareness training for employees and suppliers on smart purchasing and diligent practices of reuse, reduce and recycle Waste bins for recycle waste placed at office floors, NWD car park, kitchens and common areas
Waste segregation	<ul style="list-style-type: none"> Waste bins allocated for segregation of hazardous waste at office floors of the PETRONAS Twin Towers and NWD basement car park Reuse of coffee beans as compost for employees of MOKL Hotel to use for their gardens Engagement with tenants on schedule waste handling
Waste reduction	<ul style="list-style-type: none"> Implementation of a food bio-digester machine at MOKL Hotel, in partnership with waste vendor Monitoring, tracking and analysis of waste collection data is conducted monthly by MOKL Hotel

Performance for the Year**Waste Generation and Disposal by Segments**

	2018	2017	2016	2015	2014
	∨	∨	∨	∨	∨
OFFICE AND CAR PARK					
Total Hazardous Waste Generated (metric tonnes)	9.88	9.133	2.173	4.640	3.975
Total Hazardous Waste Disposed (metric tonnes)	9.88	10.284	1.750	4.122	1.920
RETAIL					
Recycled Waste (tonnes)	4,232	3,819	2,997	-	-
Total Hazardous Waste Generated (metric tonnes)	0.755	0.920	-	-	-
Total Hazardous Waste Disposed (metric tonnes)	0.970	0.920	-	-	-
HOTEL					
Total Hazardous Waste Generated (metric tonnes)	0.50	0.746	0.903	0.903	0.901
Total Hazardous Waste Disposed (metric tonnes)	0.50	0.970	0.903	0.903	0.901
Waste Intensity (kg per room)	2.35	3.80	4.70	4.08	3.52
Waste Diversion (%)	25.76	23.13	22.39	17.06	14.16

In 2018, KLCCP Stapled Group generated approximately 11.14 metric tonnes of hazardous waste from its office and hotel operations. This increase was mainly due to the ongoing initiative of changing fluorescent tubes to LED lights under our GBI initiatives for PETRONAS Twin Towers and Menara 3 PETRONAS and the generation and disposal of spent solvent due to break down of dry cleaning machine at MOKL Hotel.

As at December 2018, MOKL Hotel's Waste Intensity (landfill waste per overall guests' room nights) was at 2.35kg per room compared to 3.8 kg per room in 2017. This decrease was mainly due to the ongoing campaign on educating guests to reduce waste, implementation of Electronic Direct Marketing and MO Digital Library where guests can download newspapers and magazines eliminating print flyers and hard copy newspapers. MOKL Hotel's focus on the requirement to practice the 3R of Reduce, Reuse and Recycle paid off when the hotel's waste diversion increased to 25.76% from 23.13% in 2017 which contributed less to landfill waste.

ENVIRONMENT



CASE STUDY

MANAGING WET FOOD WASTE AT MOKL HOTEL

When compared to overall waste generated by the hotel, wet food waste consists of 26% of the hotel's total waste. Waste disposal companies are not provided with environmental alternatives where disposal is concerned, thus all wet food waste are dumped into landfills.

From the middle of 2018, MOKL hotel initiated the implementation of a bio-digester, Ecowiz Pte Ltd, which uses aerobic digestion of food waste in a mixer chamber using microbes and enzymes to break down the food waste into water slurry within 24 hours. The slurry will then be directed to the sewer system for treatment by Indah Water.

The implementation of bio-digester is environmentally beneficial as it enables MOKL Hotel to save wet food waste from being dumped into landfills. In addition, it saves one trip per day of haulage to landfills. MOKL Hotel's daily wet food waste is approximately 300 – 600 kg per day. The bio-digester machine can take up to 500 kg of waste per day and the balance is stored in wet food waste chiller to be digested at the next slow day.



RESPONSIBLE MATERIAL USE

KLCCP Stapled Group takes pride in ensuring our assets and facilities are managed diligently to ensure they are always in pristine condition and cater to the comforts of our users and occupants whilst adhering to environmental friendly products and material use in their maintenance. We promote the use of sustainable building and fit out materials in our assets and eco-friendly products throughout our operations as part of our roles in inculcating environmental values and behaviours within the organisation and delivering environmental, social and business benefits.

Promoting the use of Eco-Friendly Products

At KLCCP Stapled Group, we continue to promote the use of eco-friendly products throughout our business operations in our effort towards minimising adverse impact to the environment and for the safety and health of our employees and customers.

Key Initiatives for the Year

<p>PETRONAS Twin Towers and Menara 3 PETRONAS</p>	<ul style="list-style-type: none"> • Implementation of green product requirement as part of Invitation To Bid (ITB) submission • Carpet flooring and adhesive used for fit out are from recycled materials and low in Volatile Organic Compound (VOC) • Materials for ceiling insulation were of recycled content materials and non-toxic • All wiring outlet plates are PVC free to minimise outgassing of toxic substances and the lifecycles issues are also consideration in terms of production and disposal
<p>MOKL Hotel</p>	<ul style="list-style-type: none"> • Sourced from locally farmed fish, and locally grown vegetables, fruits, herbs and spices • Photocopying paper purchase from FSC approved paper (Forest Stewardship Council) from UPM Asia Pacific Pte. Ltd • Bedroom amenities such as shampoo, body wash, conditioner and body lotion tubes are made of Polyethylene (PE) which are recyclable. The ingredients are derived from natural plants and with essential oils. • The Mandarin Oriental Spa utilises: <ul style="list-style-type: none"> - Essential oils derived from organically grown plants - All oils, fragrances and essences contain 100% natural ingredients - All treatment oils come in recyclable glass bottles

ENVIRONMENT



CASE STUDY

PROMOTING SUSTAINABLE FISH FARMING AT PULAU KETAM BY MOKL HOTEL

With the increase in human population, the demand for food production increases. Where seafood is concerned, the fisherman will harvest from the oceans and seas. With this increase in demand, many have witnessed the decline of numerous ocean species. Thus with sustainable fishing, this has helped with meeting the demand whilst alleviating the depletion of ocean species.

In order to ensure or help to sustain fresh fish supply, MOKL Hotel's fish vendor, Dragon Taste/ Aqua Ceria has embarked on aquaculture, creating their own fish farm located at Pulau Ketam. Employees from MOKL Hotel paid a visit to the farm whereby the owner explained about fish farming, creating quality fish food and maintaining quality fishes.

A floating cage system farm with approximately 720 cages can be found in the open sea of Pulau Ketam. Among the quality marine fish species farmed are Tiger Grouper, Green Grouper, Giant Grouper (Asian Cod), Red Snapper and Barramundi (Asian Seabass).

Since purchasing from Dragon Taste, MOKL Hotel have been able to maintain their quality of seafood served due to daily delivery of fresh live, chilled, and frozen fish. This also allows the hotel to support sustainable fishing by vendors who are certified by Aquaculture Stewardship Council (ASC).

Live fish such as Pearl Tiger Garoupa and Soon Hock, are served at Lai Po Heen restaurant and Banquet events. Also available and served in banquets are the chilled and frozen fishes such as Red Snapper, Seabass and Garoupa (cooked whole and fillet).

The hotel's investment is in supporting companies who are doing their part in sustainable fishing. Approximately 20% to 30% of the total seafood purchased in 2018 comes from Dragon Taste. MOKL Hotel will continue to support vendors who venture into sustainability practices that will benefit mankind.



BIODIVERSITY

Protecting and improving biodiversity is an integral part of our well-being as well as the environment and the eco-system surrounding us. KLCCP Stapled Group acknowledges the critical need to conserve our environment for our current and future generations. Over the years, we continue to upscale our efforts in maintaining and conserving our ecosystem and biodiversity through landscaping, conservation of native species and habitat protection and tree planting to leave a positive and lasting legacy in the areas where we operate.

Our biodiversity efforts are reflected through our KLCC Park, which is located in the middle of the 100-acre KLCC Development. The KLCC Park is a botanical wealth that showcases a rich composition of tree species carefully sourced throughout the country. Annually, we spend approximately RM1.6 million for the maintenance of the KLCC Park.

SEC 01

SEC 02

SEC 03

SEC 04

SEC 05

SEC 06

SEC 07

ENVIRONMENT



CASE STUDY

KLCC PARK'S ECO-SYSTEMS

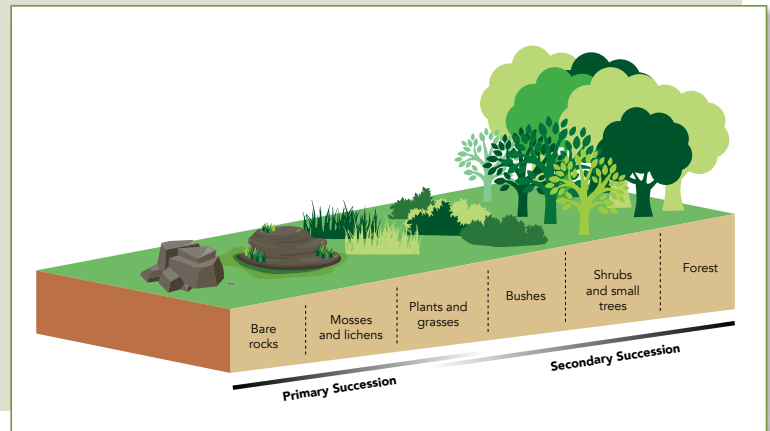
Malaysia's terrestrial ecosystems and its succession process (as featured in diagram below) is well represented within the KLCC Park which hosts 44 species of woody and flowering plants; shrubs and small trees as well as large dipterocarps and palms. The tree species also represent the different elevations at which they grow from the coastal area i.e. sea hibiscus, nibong and sea coconut and lowland dipterocarp i.e. Borneo camphor, penaga, chengal and shorea and together they form a profile of a mixed dipterocarp forest.

In addition to these important forest species, KLCC Park also comprises fruit trees such as rambutan, langsung and mangosteen as well as plants with medicinal properties such as sandal bead tree and Malayan teak.

These tree species are carefully maintained and to ensure longevity and adaptation to the environment, various treatment are carried out which include enriching of fertiliser, pest and diseases control and pruning to remove dead branches. This is also part of the preventive

maintenance carried out on a regular basis which will help sustain the growth and survival of plants and trees to support the ecology of the park.

With its diversity of plant species from different ecosystems, KLCC Park could be viewed as an important urban green area that also functions as a small botanic garden and habitat to bird species, insects and possibly small mammals although this may need to be studied and inventoried in greater detail.



Our environmental sustainability involves KLCCP Stapled Group playing its part as a good corporate citizen and encourage our employees to develop environmental and community outreach initiatives to appreciate and inculcate the back-to-nature awareness. Through such activities, we endeavor to make a difference and inspire others to do the same in our quest for a sustainable future.

Envirocomm 2018

As an environmentally and socially responsible organisation, KLCCP Stapled Group carried out its annual Envirocomm 2018 as part of our effort in promoting environmental conservation and reaching out to the native community. Envirocomm also encourages employees' participation to create environmental awareness.

This annual activity was successfully held at the RISDA Eco Park at ULU Slim, Perak, focusing on environmental conservation and supporting the local communities. Among the programme conducted include building rock bed at Sungai Bernama Recreational Area to minimise erosion, planting of trees along Sungai Bernama and donated basic needs to the native community in the area.

Envirocomm 2018 marked our support towards environment conservation and the wellbeing of the communities. It has also become a program that promotes healthy lifestyle as well as addressing various social objective, establishing a cohesive relationship among corporates, our employees, customers and also the underprivileged community surrounding us.

Key Initiatives for the Year

Waste Not Want Not Sale	<ul style="list-style-type: none"> The objective was to raise funds for CSR initiatives in 2018, to encourage employees to Reuse, Recycle and Reduce, employees engagement A total of RM 6,000 was raised with items donated from employees for sale
Earth Hour	<ul style="list-style-type: none"> The objective was to create awareness on the need to conserve the natural resources of our planet by being responsible for our actions as well as understand the impact to our environment Shut-down of non-essential lights and equipment in the commercial and retail space and at the hotel Worked to engage and educate our tenants, guests and visitors to encourage participation and to create awareness on climate change Concerted effort made to identify and eliminate electricity usage resulting in savings
Give a Book, Take a Book	<ul style="list-style-type: none"> Encouraged employees to read as well as to reuse books. This also helps the environment by allowing employees to borrow or donate books from the library located in the staff cafeteria at MOKL Hotel
Beach Cleaning	<ul style="list-style-type: none"> The objectives of the programme was to improve the quality of facilities and promote hygienic and cleanliness of beaches and to instill civic awareness Beach Cleaning at Pantai Bagan Lalang was held in collaboration with Majlis Perbandaran Sepang in September 2018
Mangrove Plants Conservation	<ul style="list-style-type: none"> To create awareness and encourage employees participation in environmental conservation programme Conservation of mangrove plants at Kilim Geo-Forest Park, Pulau Langkawi completed in March 2018